

ASA Section on Aging and the Life Course



News from the Chair



Peter with his granddaughter

My term as Section Chair will end after the August ASA meeting in Atlanta, and Dale Dannefer will then assume this role. One of the Chair's major responsibilities is to organize sessions for the section at the annual meeting. I am pleased to report that plans for the SALC program have gone well. The many people I asked to assume responsibilities for various aspects of the meeting have done a wonderful job. It is a sign of a healthy section when so many members graciously accept invitations to be involved, and then do it. Thanks to all of you.

Inside this issue:

ASA roundtables	2-3
ASA sessions	4
Publication information	5
ASA sections	6
Butler obituary	6
Mentoring dinner	7
MWR lecture	7
Celebration of LC studies	8

I hope that each of you will come to Atlanta and use the opportunities provided by our program for intellectual stimulation and social interaction. We will get things started with our annual mentoring dinner on **Sunday, August 15, 6:00 – 8:00pm**. Janet Wilmoth has arranged for us to have this dinner at *Il Mulino*, which is within easy walking distance from the Atlanta Marriott. Our time together will include a short program with several members sharing thoughts on how to be successful in obtaining grants. Equally important, the dinner provides an opportunity for students and newer members to interact with more established members. More information on the mentoring dinner and how to reserve tickets can be found in this newsletter. Please come!

Sessions organized by the section begin at 8:30 am on **Monday, August 16** with the roundtables. Here you can discuss research ideas with a small group of aging and life course researchers with similar interests. Then there are three sessions of stimulating paper presentations. Monday at 10:30 distinguished invited speakers will address the topic "Connections across Age." At 4:30 Monday there is the session organized by James Raymo on "Social and Demographic Forces Shaping How We Age." Finally, Jessica Kelley-Moore has organized a session on "Blending Theories and Advanced Methodologies" that will begin at 8:30am on **Tuesday**.

The other major section event is scheduled for Monday at 2:30pm. Dale Dannefer will give the Matilda White Riley Distinguished lecture titled, "Age, the Life Course and Sociological Imagination." A reception follows where you can enjoy hors d'oeuvres, friendly conversation and, hopefully, critical arguments about what Dale has said. Then we will have a short business meeting and the presentation of the 2010 section awards.

Additional information on the program is included in this newsletter. As you remember from my comments in the Fall 2009 newsletter (ha!), I consider the most important goal of the section is to stimulate the intellectual development of the members. Come ready to participate in this important task by sharing your thinking and by listening to what others are thinking. We are already recognized as an exceptionally friendly section – let us also strive to make it number one in intellectual richness.

Looking forward to seeing you in Atlanta in August,

Peter Uhlenberg
Section Chair 2009-2010



**Join us
in
Atlanta!**

2010 Annual Meeting Program for the Section on Aging and the Life Course

Mentoring Dinner

6-8 p.m., Sunday, August 15
Il Mulino, 191 Peachtree Street
See page 7 for details

SALC Council Meeting

7:00-8:00 a.m., Monday, August 16
Peter Uhlenberg, Chair
Atlanta Marriott Marquis

Roundtables

8:30-10:10 p.m., Monday, August 16

Session Organizers: Debra Umberson (University of Texas) and Debra Street (State University of New York—Buffalo)

Table 1. Roundtable Session

Table President: Stephanie Woodham Burge (University of Oklahoma)

- ◆ A Life Course of Human Rights.
Rachel Elaine Bryant (Case Western Reserve University) and Robin Shura (University of North Carolina-Chapel Hill)
- ◆ Pregnancy & Parenthood among Adolescents with & without Disabilities: A Longitudinal Examination of Expectations & Outcomes.
Carrie L. Alexandrowicz Shandra (Hofstra University)
- ◆ The Relationship between Adolescent Romantic Relationships and Educational Attainment.
Stephanie Woodham Burge (University of Oklahoma), Ann M. Beutel (University of Oklahoma)

Table 2. Definitions and Constructions of Aging

Table President: Kristen Schultz Lee (State University of New York-Buffalo)

- ◆ A Stalled Revolution? Place, Time, and Social Change in Beliefs about Gender.
Kristen Schultz Lee (State University of New York-Buffalo), Paula Andreea Tufis & Duane F. Alwin (Pennsylvania State University)
- ◆ Collaborating to Teach Aging-Infused Research Courses.
Janice K. Purk (Mansfield University)
- ◆ Constructing Identity through Collective Narration: Affirming Gay and Lesbian Elders.
Jessica Merrick (University of South Florida)
- ◆ When is Middle Age? How Social Location and Family Relationships Affect Perceptions of Middle Age.
Erica Toothman (Florida State University), Anne E. Barrett (Florida State University)

Table 3. Aging and Health

Table President: Hui P. Liew (Pennsylvania State University)

- ◆ An Individual Growth Curve Analysis of SES-Health Relationship: Evidence from the 1992-2006 Health and Retirement Study.
TzeLi Hsu (Florida State University), Hui P. Liew (Pennsylvania State University)
- ◆ Gender Differences in Trajectories of Functional Health among Older Adults: Differential Exposure or Differential Vulnerability.
Leah S. Rohlfen (St. Lawrence University)
- ◆ Health Issues among Older Korean Americans.
Kyong Hee Chee (Texas State University-San Marcos)

Table 4. Aging and Disadvantage

Table President: Patricia Drentea (University of Alabama-Birmingham)

- ◆ Ethical Capital: What's a Poor Man Got to Leave?
Patricia Drentea, Beverly Rosa Williams, and Lesa Woodby (University of Alabama-Birmingham)
- ◆ Discrimination and Health Related Quality of Life among Black and White Men and Women.
Sherrill L. Sellers (University of Wisconsin-Madison and Miami University), Dennis Fryback (University of Wisconsin-Madison)
- ◆ The Intersectional Vulnerability of Nursing Home Residents during Hurricane Katrina.
Yamilette Chacon (University of South Carolina)

Refereed Roundtables , continued: August 16, 8:30-10:10, Atlanta Marriott Marquis

Table 5. Social Ties and Aging

Table President: Christopher Steven Marcum (University of California-Irvine)

- ◆ How is Social Time Distributed across the Age Structure?
Christopher Steven Marcum (University of California-Irvine)
- ◆ Social Participation and Health: Do Life Course Patterns of Participation Matter?
Erica Siegl (University of Wisconsin-Madison)
- ◆ Unraveling Parent-Adult Child Coresidence.
Michael Steketee (University of South Carolina)

Table 6. Aging and Public Policy

Table President: Amanda Kathleen Baumle (University of Houston)

- ◆ Elder Gay Men and Lesbians: Demographic, Economic, and Social Support Characteristics.
Amanda Kathleen Baumle (University of Houston), Adam Romero (Williams Institute)
- ◆ Fluid Discourse in Federal Bills: Exploring Variations in the Descriptions of Medicaid Funded Services.
Brian R. Grossman (University of California-San Francisco)
- ◆ Theorizing Gender in Research Surrendering Employment-based Health Insurance as a Determinant of Labor Force Patterns. Antje Daub (Case Western Reserve University)

Table 7. Living Arrangements in Later Life

Table President: Elena Portacolone (University of California-San Francisco)

- ◆ Living Alone in Older Age in the US and the Myth of Independence.
Elena Portacolone (University of California-San Francisco)
- ◆ Residential Relocation as a Proactive Coping Response to Disability in Later Life.
Loren Lovegreen (Simon Fraser University)
- ◆ Taking Care of Business: The Relationship Between Selfcare and Homecare Dependency Among Elderly Black Women.
Carlene M. Buchanan Turner (City University of New York-Graduate Center)
- ◆ "We're unhappy when we can't get here": Social Support and Well-Being at a Senior Citizens' Center.
Joyce Weil (University of Northern Colorado)

Table 8. Cognition, Personality and Aging

Table President: Linda A. Wray (Pennsylvania State University)

- ◆ Diabetes and Cognitive Change in Midlife and Older Adulthood.
Linda A. Wray (Pennsylvania State University), Duane F. Alwin (Pennsylvania State University), Scott M. Hofer (University of Victoria), Kristina L. Zeiser and Ching-Ju Chiu (Pennsylvania State University)
- ◆ Population Trends in Verbal Intelligence in the United States.
Duane F. Alwin (Pennsylvania State University), Julianna Pacheco (Pennsylvania State University)
- ◆ The Effect of Spousal Death on Social Support: Does Personality Matter?
Manacy Pai (Kent State University), Jung-Hwa Ha (University of Chicago)

Table 9. International Perspectives on Aging

Table President: Masa Higo (Boston College)

- ◆ Global Aging: Challenges to Older People and Risks in Later Life.
Masa Higo (Boston College)
- ◆ Gender Differences in Predictors of Subjective and Psychological Well-being of the Elderly in South Korea.
Jungui Le (Boston College), E. Othelia Lee (Boston College)
- ◆ The Transformation of Aging in Poland and Lithuania.
Duane A. Matcha (Siena College)
- ◆ Working Longer in National Contexts: Comparing Japan and the United States.
Masa Higo (Boston College), Jungui Lee (Boston College)

Table 10. Caregiving

Table President: Eva Kahana (Case Western Reserve University)

- ◆ Caring for Disabled Elders: A Challenge for Long-Term Care.
Eva Kahana (Case Western Reserve University), Loren Lovegreen (Simon Fraser University), Boaz Kahana (Cleveland State University)
- ◆ The Division of Household and Care Labor among Spouses.
Kristjane Nordmeyer (Westminster College)
- ◆ The Price for Caring: Caregiving and Income across Women's Cohorts.
Joseph Daniel Wolfe (Indiana University), Eliza K. Pavalko (Indiana University)

We're on the web!

<http://www.pop.psu.edu/asasalc/index.htm>

2010 Annual Sessions for the Section on Aging and the Life Course



Invited Session: Connections across Age

10:30-12:10 p.m., Monday August 16

Paper Session Organizer and Presider: *Peter Uhlenberg (University of North Carolina)*

Atlanta Marriott Marquis

- ◆ Older and Younger Friends in 19 European Countries. Pearl A. Dykstra (Netherlands Interdisciplinary Demographic Institute), Niels Schenk (Erasmus University Rotterdam, The Netherlands)
- ◆ Grandparent-Grandchild Ties: What Factors Affect their Function as Generational Bridges? Gunhild O. Hagestad (University of Agder), Katarina Herlofson (NOVA/Social Research, Norway)
- ◆ Intergenerational Transmission of Attitudes, Values, and Beliefs across Four Decades of Social Change. Merrill Silverstein and Jessica Penn Lendon (University of Southern California)
- ◆ Social Connections of Older Men and Women: Living Arrangements, Social network, and Health. Linda J. Waite and Juyeon Kim (University of Chicago)
- ◆ Discussant: Francesco C. Billari (Università Bocconi)

Session: Social and Demographic Forces Shaping How We Age

4:30-6:20 p.m., Monday August 16

Paper Session Organizer and Presider: James M. Raymo (University of Minnesota)

Atlanta Marriott Marquis

- ◆ Education of Children and Differential Mortality of Parents: Do Parents Benefit from their Children's Attainments? Esther M. Friedman (University of California, Los Angeles), Robert Mare (University of California-Los Angeles)
- ◆ Happiness across the Life Course or Why We Suffer during Midlife. Esther M. Friedman (University of California, Los Angeles), Robert Mare (University of California-Los Angeles), Hilke Brochmann (Jacobs University)
- ◆ Intra-country and Inter-country Differences in Older Adults' Attitudes about Grandparents' Roles. Robin Shura (University of North Carolina-Chapel Hill), Peter Uhlenberg (University of North Carolina-Chapel Hill), Benjamin Danforth (University of North Carolina-Chapel Hill)
- ◆ Work, Marriage, and Women's Retirement Security: The Significance of Race and Mexican Origin. Jacqueline L. Angel (University of Texas-Austin), Jennifer Karaz Montez (University of Texas-Austin), Ronald J. Angel (University of Texas-Austin)
- ◆ Discussant: Deborah Carr (Rutgers University)

Session: Fostering Synthesis in Aging and the Life Course Research: Blending Theories and Advanced Methodologies

8:30-10:10 a.m., Tuesday, August 17

Session Organizer and Presider: Jessica A. Kelley-Moore (Case Western Reserve University)

Atlanta Marriott Marquis

- ◆ Integrating Cumulative Advantage Theory and the Intergenerational Transmission of Inequality to Understand Health Risk Trajectories. Kim Shuey (University of Western Ontario), Andrea E. Wilson (University of Western Ontario)
- ◆ The Impact of Work and Family Trajectories on Financial Well-being at Older Ages. John Robert Warren (University of Minnesota), James M. Raymo (University of Minnesota), Andres Halpern-Manners (University of Minnesota), Julia Goldberg (University of Wisconsin-Madison)
- ◆ Joint Model of Health Trajectories and Survival among Older Americans: Testing the Cumulative Inequality Theory. Anna Zajacova (University of Wyoming), Sarah Burgard and Deborah Lowry (University of Michigan)
- ◆ The Influence of Midlife Selection Processes in Late-life Disability Trajectories. Jessica A. Kelley-Moore (Case Western Reserve University), Jieliu Lin (Case Western Reserve University)

Regular Session: Life Course

8:30-10:10 a.m., Sunday, August 15

Session Organizer and Presider: Alfonso R. Latoni (National Institutes of Health)

Hilton Atlanta

- ◆ Integrating Varieties of Life Course Concepts. Duane F. Alwin (Pennsylvania State University)
- ◆ Social Change in Structures of the Life Course: Latent Pathways in the Transition to Adulthood, 1966-2010. Ross F. Macmillan (University of Minnesota)
- ◆ Cohort Differences in the Relationship between Childhood Circumstances and Adult Health. Jenifer Hamil-Luker (University of North Carolina at Greensboro)
- ◆ The Timing of Women's Access to Occupational Pensions: Life Course Factors and Cohort Change. Katelin Isaacs (Duke University)
- ◆ Retirement Timing and Subjective Well-being. Esteban Calvo (Boston College), Christopher R. Tamborini (U.S. Social Security Administration), Natalia Sarkisian (Boston College)
- ◆ Discussant: John B. Williamson (Boston College)

New Journal on the Sociology of Mental Health

Society and Mental Health, *The Journal of the ASA Section on the Sociology of Mental Health* has been officially launched. Editor William R. Avison (The University of Western Ontario) and deputy editors Carol S. Aneshensel (UCLA), Carol A. Boyer (Rutgers University) and Scott Schieman (University of Toronto) expect to publish the first issue in early 2011.

Society and Mental Health publishes original articles that apply sociological concepts and methods to the understanding of the social origins of mental health and illness, the social consequences for persons with mental illness, and the organization and financing of mental health services and care. Its editorial policy favors manuscripts that advance the sociology of mental health and illness, stimulate further research, inform treatments and policy and reflect the diversity of interests of its readership. Submission guidelines can be found at <http://sociology.uwo.ca/SMHJournal/Submission.html>. Manuscripts must be submitted electronically at <http://mc.manuscriptcentral.com/>

Consequences of Fatherhood in Men's Lives

The Society of the Study of Human Development is pleased to announce that the latest issue of *Research in Human Development*, "The Consequences of Fatherhood in Men's Lives", has just been published. In this issue, guest editor Richard Settersten has included three empirical papers and a theoretical overview article built around the National Longitudinal Survey of Youth and its offshoots. The papers explore the consequences of fatherhood for men's personal growth and identity, social relationships, health and well-being, work and education. For more information, visit: <http://www.informaworld.com/smpp/title~db=all~content=g922645714>.

Special Issue on Reinventing Retirement

The purpose of this Special Issue in *Human Relations* is to advance novel ways of thinking about retirement. We welcome conceptual & empirical papers that develop new theoretical perspectives and harness methodologies that focus on the multiple meanings of retirement and distinctive behavioral pathways. As governments and organizations realign retirement goalposts and baby boomers explore their late career & retirement options, we ask whether our models for understanding retirement processes need to be reassessed and renewed. The full call for paper for papers is available at: http://www.tavinstitute.org/humanrelations/special_issues/retirement.html.



Section Member Debra Umberson to Edit the *Journal of Health and Social Behavior*

JHSB returns to the University of Texas at Austin and will be under the careful editorship of Debra Umberson. The last time *JHSB* was at UTA (1994-1997), Ron Angel was the editor and Deb was the deputy editor. Ron will now be part of a team of deputy editors that includes their Texas colleagues Mark Hayward and Robert Hummer along with Chloe Bird at the Rand Corporation and Stephanie Robert at the University of Wisconsin. This team is well chosen to serve the priorities Deb outlined in her proposal for the editorship: Innovation, theoretical grounding, high-quality data, cutting-edge methodological approaches, and a focus on research that can inform health policy.

Deb brings a wealth of experience and enormous energy to the editorship. She is amazingly productive in ways that reveal careful judgment, intense focus, a great deal of energy, and the ability to organize and to motivate others to perform at a high level—exactly what we want in our editors.

Excerpted from Michael Hughes article in May/June 2010 *Footnotes*

Work & Family Characteristics Predictive of Early Retirement

In the July 2010 issue of *Research on Aging*, Kubicek, Korunka, Hoonakker, and Raymo developed and tested a conceptual model of preretirement work and family characteristics as long-term predictors of early retirement. Because these characteristics mutually influence each other, they also looked at the interaction between the domains of work and family as potential determinants of early retirement. They hypothesized that work and family characteristics exert their influence indirectly (mediated through the perceived quality of work and family life) and at a temporal distance from the retirement event. Using structural equation modeling to analyze data from the Wisconsin Longitudinal Study, the authors found support for their conceptual model. The full paper is available at: <http://roa.sagepub.com/current.dtl>



ASA Sections-in-Formation

Disability in Society

All social scientists interested in disability scholarship are asked to join the newly formed Section-in-Formation of the ASA: Disability in Society. The existence of the Section is dependent on the ability to attract at least 300 paying members by September 2010, or we lose the opportunity to become a section of ASA. If you would like to advance disability scholarship in sociology, please join us today. The Disability section is pleased to offer FREE membership to graduate students who are current members of ASA who would like to join the section. Contact Liat Ben-Moshe (lbenmosh@maxwell.syr.edu) with any inquiries about the section and becoming a member.

Altruism and Social Solidarity

A new American Sociological Association section on "Altruism and Social Solidarity" is now in formation. The section focuses attention on phenomena such as generosity, altruism, forgiveness, philanthropy, intergroup cooperation, and universalizing solidarity. Please consider joining us to participate in the activities and to work toward realizing the goals set forth in the Section's Mission Statement. For more information on the new section's mission, visit the section homepage at: <http://www.csun.edu/~hbsoc126/>. To join, go to the ASA website www.asanet.org. Select "Membership Information," then "Join or Renew," and "Join a Section." You can join the section for only \$5.

SALC Needs More New Members

Please encourage colleagues and junior scholars who are not SALC members but work in our area of study to consider the benefits of joining SALC. By joining the section now they can participate in the planned Annual meeting SALC events, including the Mentoring dinner on August 15th and the Section Roundtables, Matilda White Riley Lecture and Section Business meeting on the 16th. The full benefits of membership can be found at: <http://www.pop.psu.edu/asasalcmembership.htm>.

Section membership costs \$13 for regular members and \$6 for student members. Faculty, please consider sponsoring your students! Section membership can be initiated or renewed at the following website: <https://www.e-noah.net/ASA/Login.asp>. We appreciate your consideration and hope to see you in Atlanta!

*Cheryl Elman and Robin Shura,
SALC Membership Committee*

"Human beings need the freedom to live with change, to invent and reinvent themselves a number of times through their lives."

Dr. Robert Butler (1927-2010)
Why Survive? Being Old in America (1975)

Father of Gerontology Dies

By Thomas H. Maugh II, Los Angeles Times, July 7, 2010

Dr. Robert N. Butler, gerontologist who pioneered the study of aging, founded the National Institute on Aging and the first department of geriatrics at a U.S. medical school, and received the Pulitzer Prize for his seminal book on healthy aging, died July 3, 2010. He was 83 years old and had leukemia.

"Not only was he the leading voice on issues related to longevity and the study of aging, but he was a moral voice who insisted that society value our elders in its public policies and programs," said Michael J. Burgess, director of the New York State Office for Aging.

Butler was instrumental in research that established most frailties of the elderly were caused by disease, socioeconomic adversity and even personality. Aging was a risk factor for many problems of the elderly, such as Alzheimer's disease, but not the cause. That conclusion led to a breakthrough in our thinking about aging and laid the groundwork for future studies about healthy aging.

In 1968, Butler coined the term "ageism" to describe what he believed was bias against the elderly. His work was also instrumental in developing the concepts of "life review," "productive aging" and successful aging."

Butler is author or co-author of several books, including "The New Love and Sex After 60," "The Longevity Revolution" and his latest book, "The Longevity Prescription: The 8 Proven Keys to a Long, Healthy Life."

"His advocacy and writings profoundly influenced every sphere of aging policy and programs, from the creation of an aging network to services for caregivers," Mayor Michael Bloomberg said.



Section on Aging and the Life Course

Mentoring Dinner and Program

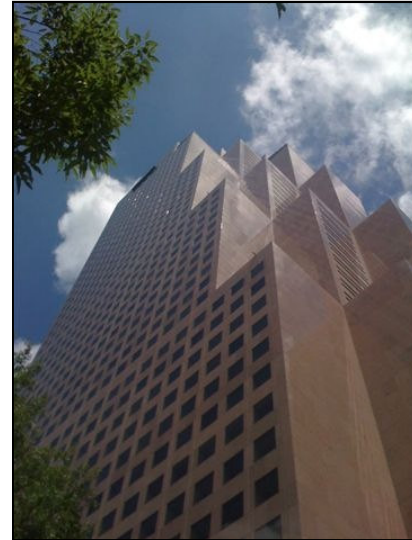
Sunday, August 15, 2010

6 to 8 p.m.

Il Mulino

191 Peachtree Street, Atlanta

**(two blocks from the Atlanta Hilton and
Atlanta Marriott Marquis)**



**Please make your
reservation to join
us for the mentoring
dinner by August 6.**

Tickets are \$15 for ASA student members, \$30 for ASA regular members and guests. Tickets include dinner and drinks. There will be a short program entitled, "*Grant Writing Tips*" featuring remarks and Q&A with section members.

SPACE IS LIMITED, SO YOU MUST RESERVE A TICKET BY AUGUST 6. To reserve a ticket, e-mail Janet Wilmoth, salc-mentor@maxwell.syr.edu, requesting the number and kind of tickets. Tickets will be held for you at the door.

To pay for your ticket(s), send a check or pay at the door at ASA. Make checks out to "SALC American Sociological Association" and mail to Janet Wilmoth, Syracuse University, Center for Policy Research, 426 Eggers Hall, Syracuse, NY 13244.

To keep the event ticket price affordable for students, we are seeking donations for this event from friendly individuals, departments, centers, and other units. We will acknowledge pledges in the program for the dinner, the Section reception and in the Section newsletter. Questions and pledges can be made by sending an email to Janet Wilmoth, Chair, SALC Committee on Mentoring and Professional Development, at salc-mentor@maxwell.syr.edu. Thanks for your support.

Section on Aging and the Life Course

Matilda White Riley Lecture



Matilda White Riley

2:30-3:30 p.m.

August 16, 2010

Atlanta Marriott Marquis

Distinguished Scholar Address: Dale Dannefer
"Age, the Life Course and Sociological Imagination"

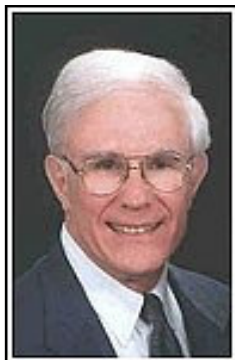


Dale Dannefer

Followed by Business Meeting and Reception
3:30-4:10

A Celebration of Life Course Studies: Honoring Glen Elder's Contributions to Sociology

1 p.m. Friday, August 13th
Atlanta Marriot Marquis



Plan to arrive early in Atlanta at the ASA meeting this summer to attend an exciting afternoon of sessions examining the way in which the life course perspective has influenced scholarship in a wide range of areas within sociology. The sessions and reception will be held at the Marriot Marquis (L401/402). The tentative schedule follows.

Introductions: Robert Crosnoe and Monica Kirkpatrick Johnson

Session 1: Sociological Perspectives on the Life Course

- ◆ Population (Dennis Hogan)
- ◆ Social Psychology (Linda George)
- ◆ Medical Sociology and Mental Health (Blair Wheaton)
- ◆ Biodemography (Mark Hayward)
- ◆ Discussant: Eliza Pavalko

Session 2: Life Course Stages and Contexts of the Life Course

- ◆ Children and Youth (Jeylan Mortimer)
- ◆ Aging (Angela O'Rand)
- ◆ Schools and Education (Barbara Schneider)
- ◆ Family (Arland Thornton)
- ◆ Discussant: Richard Settersten

Closing Remarks: Michael Shanahan

Reception immediately following.

Section on Aging and the Life Course

Chair

Peter Uhlenberg
University of NC at Chapel Hill
CB 3210 – Sociology
Chapel Hill, NC 27599-3210
peter_uhlenberg@unc.edu

Chair Elect

Dale Dannefer
Case Western Reserve University
10900 Euclid Avenue
Cleveland, OH 44106
dale.dannefer@case.edu

Past Chair

Eliza K. Pavalko
Indiana University
Ballantine Hall 744
1020 E. Kirkwood Ave.
Bloomington, IN 47405-7103
epavalko@indiana.edu

Secretary/Treasurer

Anne E. Barrett
Florida State University
526 Bellamy Building
Tallahassee, FL 32306-2270

Council

Jessica A. Kelley-Moore ('10)
Case Western Reserve University
jessica.kelley-moore@case.edu

Victor Marshall ('10)
University of NC at Chapel Hill
victor_marshall@unc.edu

Dennis Hogan ('11)
Brown University
Dennis_Hogan@brown.edu

Ross Macmillan ('11)
University of Minnesota
macmi005@umn.edu

Debra Street ('12)
University of New York at Buffalo
dastreet@buffalo.edu

Debra Umberson ('12)
University of Texas at Austin
umberson@prc.utexas.edu



Communications Officers

Jenifer Hamil-Luker
Newsletter editor
University of NC at Greensboro
jenifer_hamilluker@uncg.edu

Tonya Allen
Webmaster
Population Research Institute
The Pennsylvania State University
allen@pop.psu.edu

Linda A. Wray
Listserv editor
The Pennsylvania State University
law30@psu.edu

Student Members

Jennifer Karas Montez ('10)
University of Texas-Austin
jennkaras@prc.utexas.edu

Amelia Karraker ('11)
University of Wisconsin at Madison
akarrake@ssc.wisc.edu